



creative
MATTERS
INSPIRED WALL & FLOOR COVERINGS

Perennial

A TIMELESS FLOORCOVERING COLLECTION



Perennial

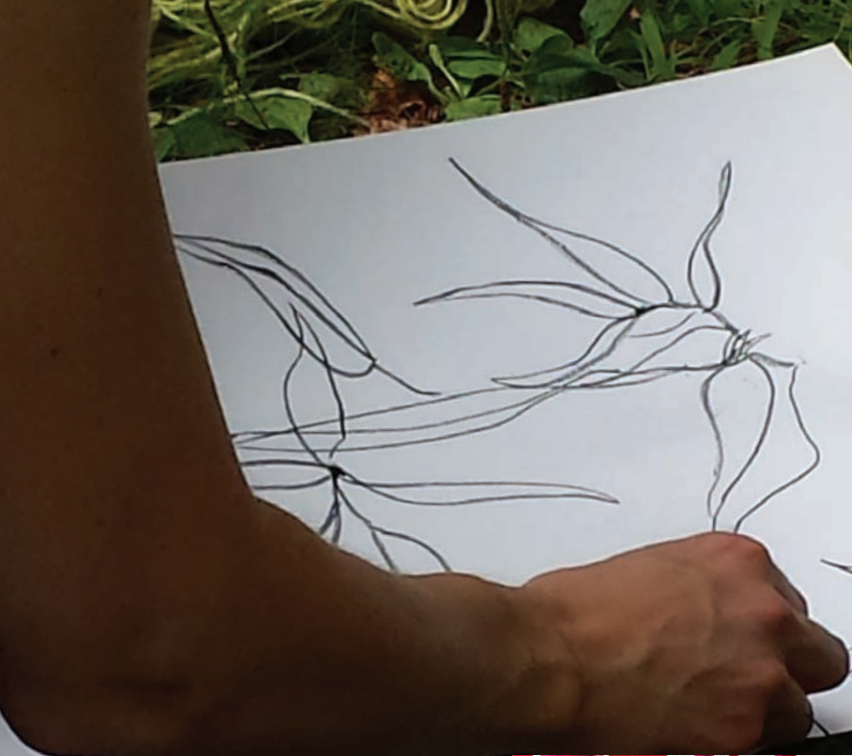
**exuberant blooms,
luxuriant petals,
graceful fronds.**

Eleven statement designs and colourways reflecting the yearning for summer's bounty after Canada's prolonged polar chill. Bold botanicals, masculine florals, bursting with wild abundance yet tamed in the timeless beauty of a handknotted rug.



inspired by nature

Art Day. A concert of ideas, media and inspiration. A time-honoured practice to contemplate form and colour. To engage with the process. The synchronicity, synergy and symbiosis of pure design.





HYDRANGEA - CHARCOAL

SIZE: 8' x 10', 9' x 12', 10' x 14', 12' x 15'

DETAIL: Handknotted, Chinese silk with Tibetan wool in 100 knot,
4mm cut pile construction. Made in Nepal.

CUSTOM COLOURS AND SIZES AVAILABLE





HYDRANGEA - INDIGO

SIZE: 8' x 10', 9' x 12', 10' x 14', 12' x 15'

DETAIL: Handknotted, Chinese silk with Tibetan wool in 100 knot, 4mm cut pile construction. Made in Nepal.

CUSTOM COLOURS AND SIZES AVAILABLE





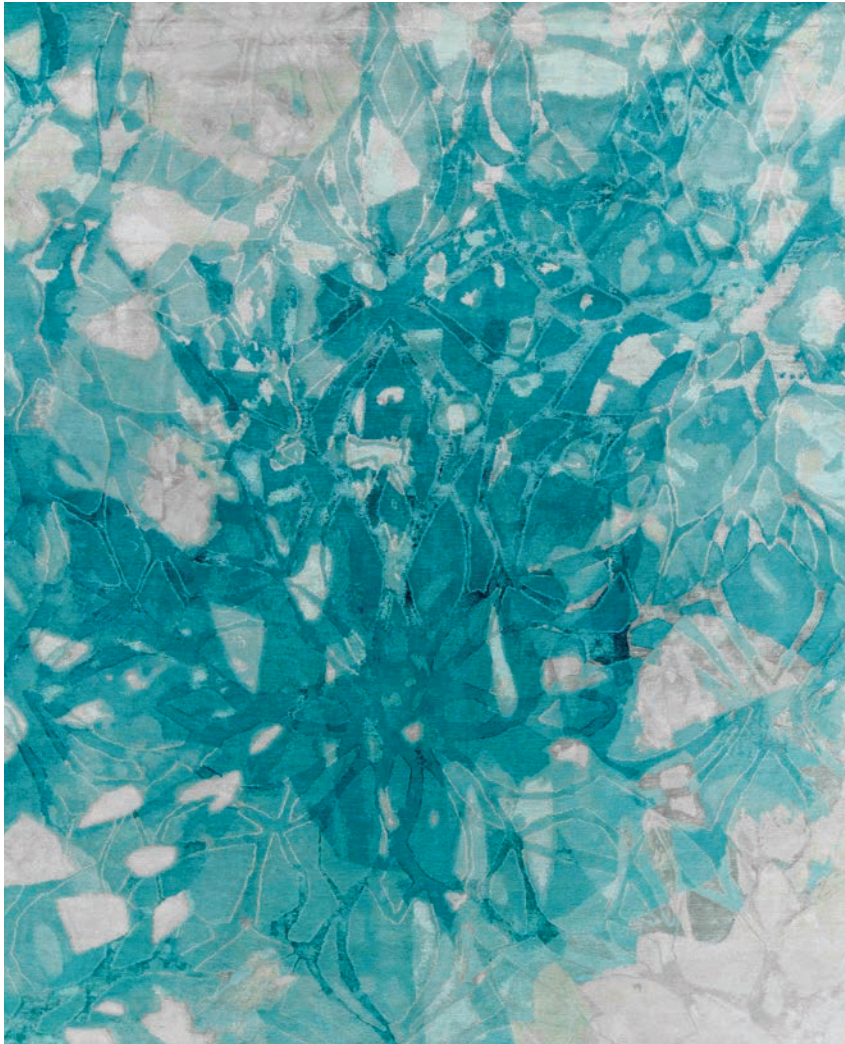
SILVERPLATE - PLUM

SIZE: 8' x 10', 9' x 12', 10' x 14', 12' x 15'

DETAIL: Handknotted, Chinese silk with Tibetan wool in 100 knot, 4mm cut pile construction. Made in Nepal.

CUSTOM COLOURS AND SIZES AVAILABLE





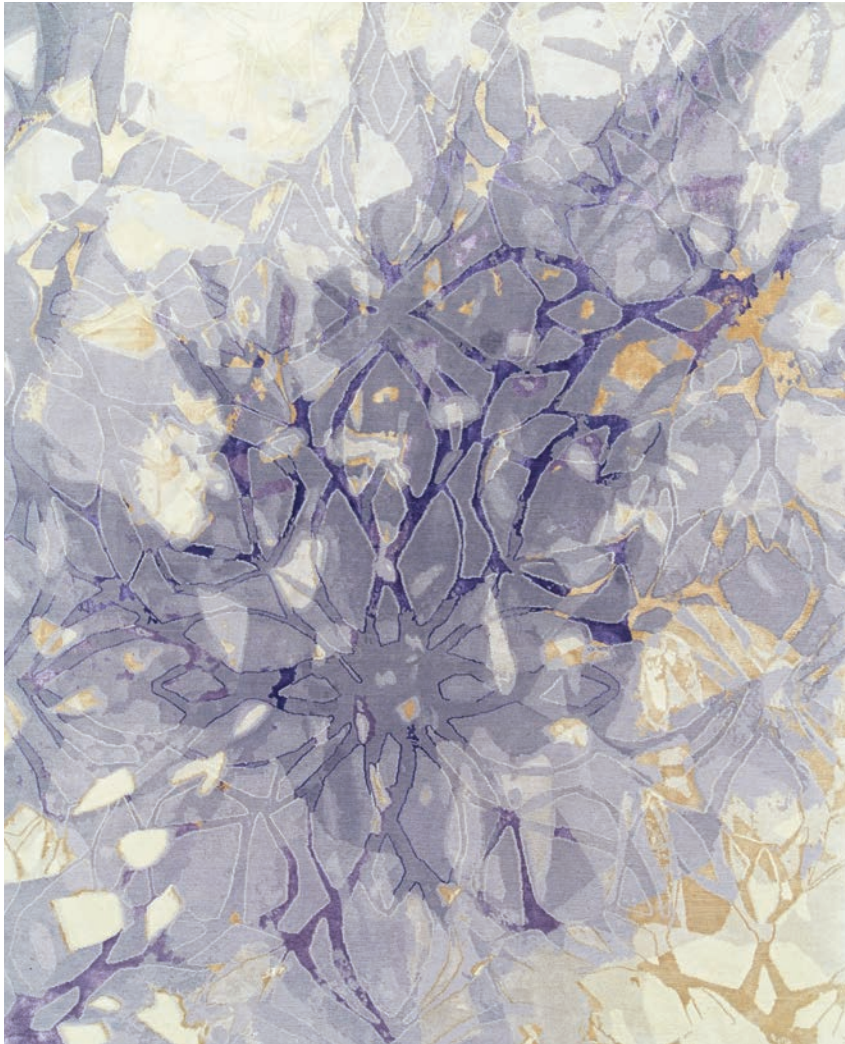
EMERGE - AQUA

SIZE: 8' x 10', 9' x 12', 10' x 14', 12' x 15'

DETAIL: Handknotted, Chinese silk with Tibetan wool in 100 knot, 4mm cut pile construction. Made in Nepal.

CUSTOM COLOURS AND SIZES AVAILABLE





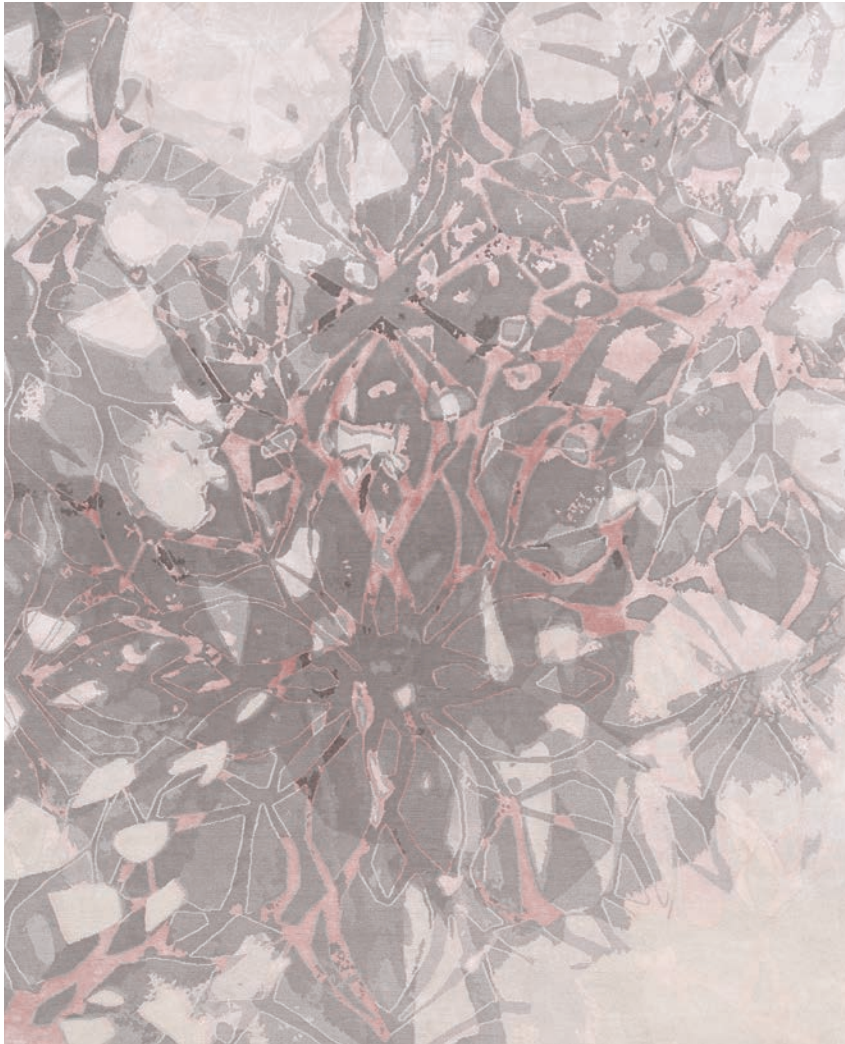
EMERGE - PLUM

SIZE: 8' x 10', 9' x 12', 10' x 14', 12' x 15'

DETAIL: Handknotted, Chinese silk with Tibetan wool in 100 knot, 4mm cut pile construction. Made in Nepal.

CUSTOM COLOURS AND SIZES AVAILABLE





EMERGE - RASPBERRY

SIZE: 8' x 10', 9' x 12', 10' x 14', 12' x 15'

DETAIL: Handknotted, Chinese silk with Tibetan wool in 100 knot, 4mm cut pile construction. Made in Nepal.

CUSTOM COLOURS AND SIZES AVAILABLE





EMERGE - SPEARMINT

SIZE: 8' x 10', 9' x 12', 10' x 14', 12' x 15'

DETAIL: Handknotted, Chinese silk with Tibetan wool in 100 knot, 4mm cut pile construction. Made in Nepal.

CUSTOM COLOURS AND SIZES AVAILABLE





NOUVEAU - OCHRE

SIZE: 8' x 10', 9' x 12', 10' x 14', 12' x 15'

DETAIL: Handknotted, Chinese silk with Tibetan wool in 100 knot, 4mm cut pile construction. Made in Nepal.

CUSTOM COLOURS AND SIZES AVAILABLE





ROSE - TECHNICOLOUR

SIZE: 8' x 10', 9' x 12', 10' x 14', 12' x 15'

DETAIL: Handknotted, Chinese silk with Tibetan wool in 100 knot, 4mm cut pile construction. Made in Nepal.

CUSTOM COLOURS AND SIZES AVAILABLE





RUCHE - PASTEL

SIZE: 8' x 10', 9' x 12', 10' x 14', 12' x 15'

DETAIL: Handknotted, Chinese silk with Tibetan wool in 100 knot,
4mm cut pile construction. Made in Nepal.

CUSTOM COLOURS AND SIZES AVAILABLE





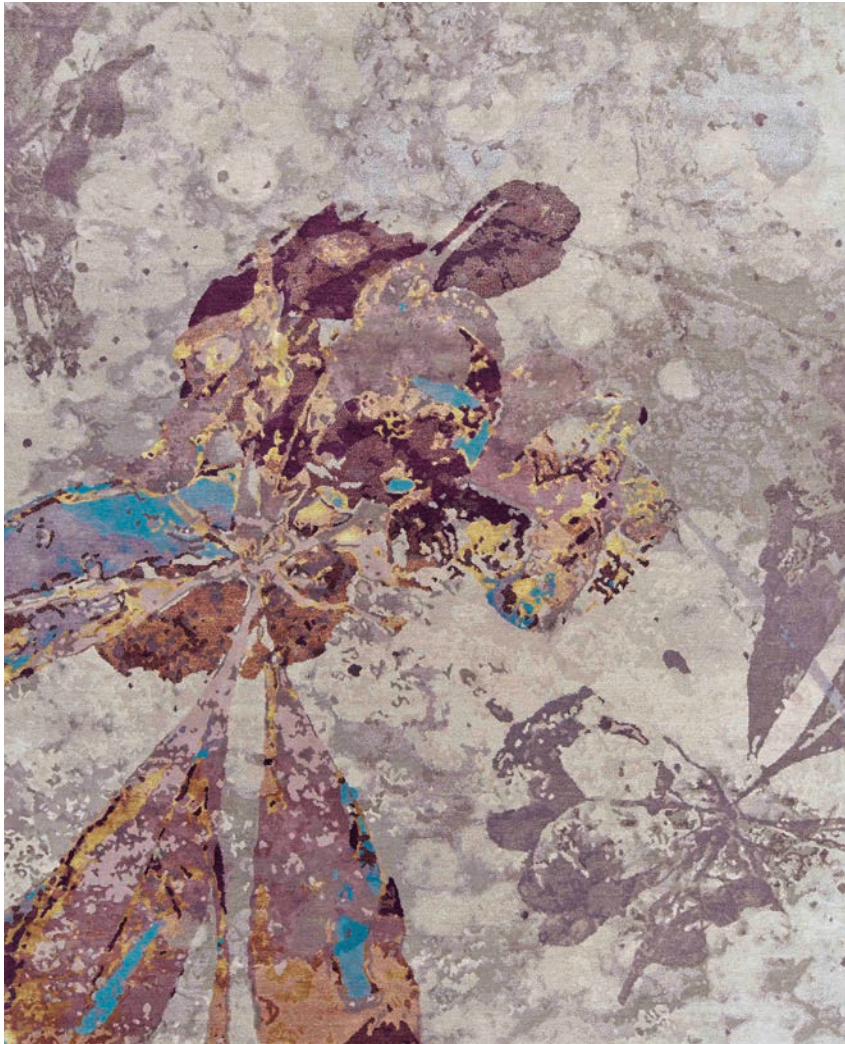
RUCHE - PLUM

SIZE: 8' x 10', 9' x 12', 10' x 14', 12' x 15'

DETAIL: Handknotted, Chinese silk with Tibetan wool in 100 knot, 4mm cut pile construction. Made in Nepal.

CUSTOM COLOURS AND SIZES AVAILABLE





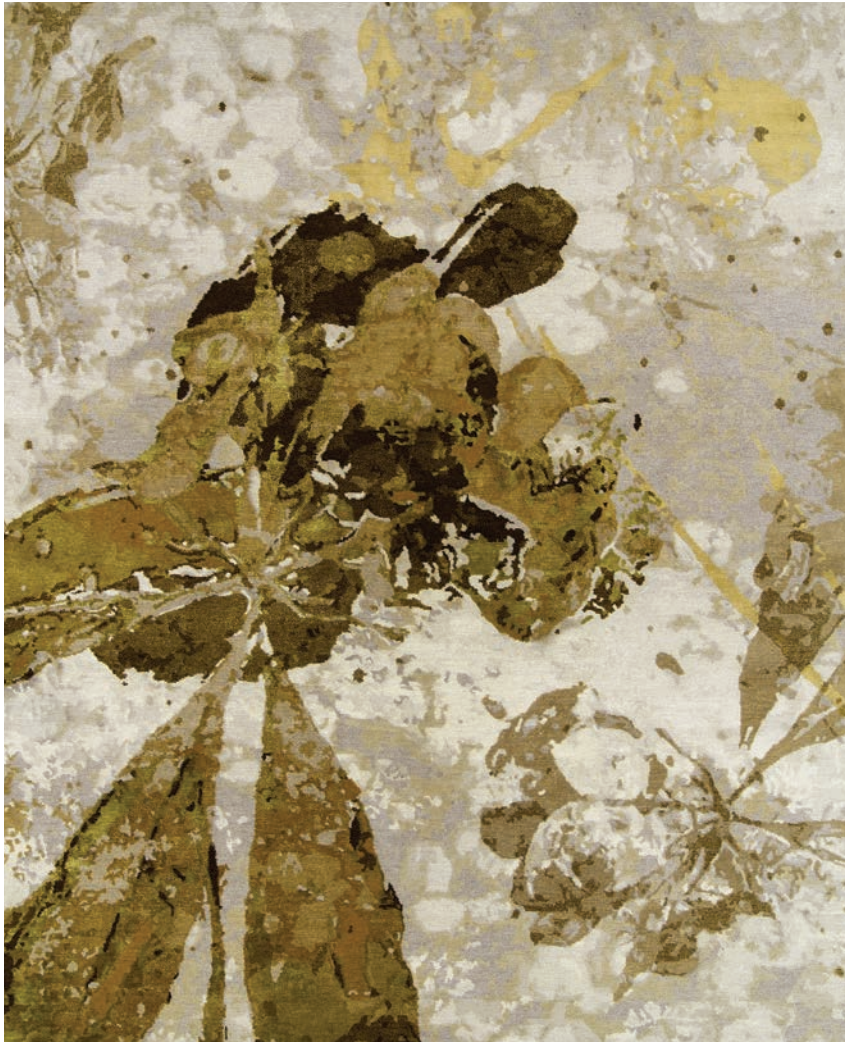
VIVA - OCHRE

SIZE: 8' x 10', 9' x 12', 10' x 14', 12' x 15'

DETAIL: Handknotted, Chinese silk with Tibetan wool in 100 knot, 4mm cut pile construction. Made in Nepal.

CUSTOM COLOURS AND SIZES AVAILABLE





VIVA - OLIVE

SIZE: 8' x 10', 9' x 12', 10' x 14', 12' x 15'

DETAIL: Handknotted, Chinese silk with Tibetan wool in 100 knot, 4mm cut pile construction. Made in Nepal.

CUSTOM COLOURS AND SIZES AVAILABLE





VIVA - PASTEL

SIZE: 8' x 10', 9' x 12', 10' x 14', 12' x 15'

DETAIL: Handknotted, Chinese silk with Tibetan wool in 100 knot, 4mm cut pile construction. Made in Nepal.

CUSTOM COLOURS AND SIZES AVAILABLE





SCATTER - BLUE

SIZE: 8' x 10', 9' x 12', 10' x 14', 12' x 15'

DETAIL: Handknotted, Chinese silk with Tibetan wool in 100 knot, 4mm cut pile construction. Made in Nepal.

CUSTOM COLOURS AND SIZES AVAILABLE





Who we are. The Perennial Collection features the best of what Creative Matters has become known for after 25+ years of creating timeless yet contemporary floor and wallcoverings with interiors professionals worldwide.

Rugs that channel design excellence with an intimate understanding of natural fibres and artisanal techniques. Rugs that understand their role in the bigger picture. Standout pieces textured in all the right ways. Rugs that are meticulously crafted with respect for people and the environment.

As a result of collaborations with interiors influencers such as Yabu Pushelberg, Karim Rashid, HOK and Gensler, our rugs are now found in over 40 countries. We travel the world for consultations, to liaise with our artisans and for installations, but we design from a historic building in Toronto, Canada.



The Creative Matters label is your guarantee that all design and production details were carefully considered along with every possibility for fair trade. We are aided in this continuing quest by our partnership with Label STEP.

You're Inspired by this Collection – what's next?

Available in six standard sizes, the rugs are hand-knotted in a sumptuous yarn blend of handspun wool with touches of silk. However, different spaces require different solutions, so we often work with interiors professionals to customize the designs in size, colour, quality, method of production – and even the design itself. The designs reemerge in

circular rugs or runners; neutral palettes become emboldened with colour; details may be intensified or subdued; borders add elegant dimension; and the fibre mix is retextured for heavy traffic or additional luxe.

The Perennial Collection was designed by our team and then finessed in collaboration with our artisanal partners throughout 2015. Please visit our website to see the other five collections.

The Perennial Collection. Spirited florals pay homage to current urban trends. Hydrangea, lisianthus and alstromeria harvested and entwined in handspun wool. Diverse beauty grounded in sophisticated neutrals: champagne, and ecru, charcoal and silvermist. Ephemerality expressed with a caress of silk. Inspiration and technique woven to gratify the perceptive eye. Designs to enliven and embellish. Designs for intelligent spaces.

Fair Trade is important to us. We are a small team of creative people with families, children and grandchildren. Throughout our firm, we work to trade responsibly and minimize our environmental footprint. Most important in this endeavour is our membership of the Swiss based Label STEP – an international non-profit organization committed to promoting environmentally friendly production methods, improving the working and living conditions of carpet weavers, and fighting child labour.



inspired floor and wallcoverings

CREATIVE MATTERS INC.

532 ANNETTE STREET, TORONTO, CANADA

M6S 2C2 **T** 416.934.9771 **F** 416.934.1528

cmi@creativemattersinc.com www.creativemattersinc.com

Label STEP Partner – Improving the working and living conditions of weavers